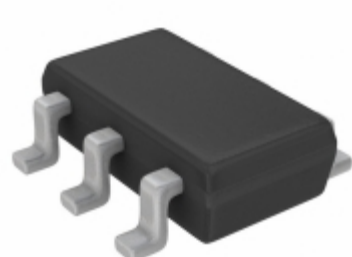


MAX1976AEZT160+T



Part Number: [MAX1976AEZT160+T](#)
Manufacturer: [Maxim Integrated](#)
Description: IC REG LIN 1.6V 300mA TSOT23-6
Data sheet: [MAX1963A,76A](#)
[Part Numbering System](#)

RoHS Status: Lead free / RoHS Compliant
Ship From: Hong Kong
Shipment Way: DHL/Fedex/TNT/UPS/EMS

Images are for reference only.
 See Product Specifications for product details.
 Buy **MAX1976AEZT160+T** with confidence from
 Component-World.HK, 1 Year Warranty

[Request For Quotation](#)

PRODUCT PARAMETER

Part Number	MAX1976AEZT160+T	Manufacturer	Maxim Integrated
Description	IC REG LIN 1.6V 300mA TSOT23-6	Lead Free Status / RoHS Status	Lead free / RoHS Compliant
Quantity Available	53269 pcs	Data sheet	MAX1963A,76A Part Numbering System
Category	Integrated Circuits (ICs)	Voltage Dropout (Max)	-
Voltage - Output (Min/Fixed)	1.6V	Voltage - Output (Max)	-
Voltage - Input (Max)	3.6V	Supplier Device Package	TSOT-23-6
Series	-	Protection Features	Over Current, Over Temperature, Short Circuit
Packaging	Tape & Reel (TR)	Package / Case	SOT-23-6 Thin, TSOT-23-6
PSRR	70dB (1kHz)	Output Type	Fixed
Output Configuration	Positive	Operating Temperature	-40°C ~ 85°C
Number of Regulators	1	Mounting Type	Surface Mount
Moisture Sensitivity Level (MSL)	1 (Unlimited)	Manufacturer Standard Lead Time	6 Weeks
Lead Free Status / RoHS Status	Lead free / RoHS Compliant	Detailed Description	Linear Voltage Regulator IC Positive Fixed 1 Output 1.6V 300mA TSOT-23-6
Current - Quiescent (Iq)	140µA	Current - Output	300mA
Control Features	Enable, Reset		

Component-World.com is a Reliable Stocking Distributor of Electronic Components. We specialize in all Maxim Integrated series electronic components. We have 53269 pieces of Maxim Integrated MAX1976AEZT160+T in stock available now. Request a quote from electronics components distributor at Component-World.com, our sales team will contact you within 24 hours.
 RFQ Email: info@Components-World.com

RELATED PRODUCTS

	Part#: MAX1976AETT130+ Description: IC REG LINEAR 1.3V 300MA 6TDFN	Manufacturers: Maxim Integrated	RFQ
	Part#: MAX1976AEZT110+ Description: IC REG LIN 1.1V 300MA TSOT23-6	Manufacturers: Maxim Integrated	RFQ
	Part#: MAX1976AEZT100+ Description: IC REG LINEAR 1V 300MA TSOT23-6	Manufacturers: Maxim Integrated	RFQ
	Part#: MAX19777AZA+ Description: IC ADC 12BIT 3MSPS 8WLP	Manufacturers: Maxim Integrated	RFQ
	Part#: MAX1976AETT160+ Description: IC REG LDO 300MA W/RESET TDFN	Manufacturers: Maxim Integrated	RFQ
	Part#: MAX1976AEZT300+T Description: IC REG LDO 300MA W/RESET TSOT	Manufacturers: Maxim Integrated	RFQ
	Part#: MAX1977EEI+T Description: IC CNTRLR PS QUAD HI EFF 28QSOP	Manufacturers: Maxim Integrated	RFQ
	Part#: MAX19777EVSYS# Description: EVAL MAX19777 12 BIT ADC	Manufacturers: Maxim Integrated	RFQ
	Part#: MAX1976AEZT285+ Description: IC REG LIN 2.85V 300MA SOT23-6	Manufacturers: Maxim Integrated	RFQ
	Part#: MAX1977EEI+ Description: IC CNTRLR PS QUAD HI EFF 28QSOP	Manufacturers: Maxim Integrated	RFQ
	Part#: MAX1976AETT160+T Description: IC REG LDO 300MA W/RESET TDFN	Manufacturers: Maxim Integrated	RFQ
	Part#: MAX1976AEZT250+ Description: IC REG LIN 2.5V 300MA TSOT23-6	Manufacturers: Maxim Integrated	RFQ
	Part#: MAX1976AEZT285+T Description: IC REG LIN 2.85V 300MA TSOT23-6	Manufacturers: Maxim Integrated	RFQ
	Part#: MAX1976AETT120+ Description: IC REG LINEAR 1.2V 300MA 6TDFN	Manufacturers: Maxim Integrated	RFQ
	Part#: MAX1976AEZT300+ Description: IC REG LDO 300MA W/RESET TSOT	Manufacturers: Maxim Integrated	RFQ
	Part#: MAX1976AEZT180+T Description: IC REG LIN 1.8V 300MA TSOT23-6	Manufacturers: Maxim Integrated	RFQ
	Part#: MAX1976AETT150+ Description: IC REG LINEAR 1.5V 300MA 6TDFN	Manufacturers: Maxim Integrated	RFQ
	Part#: MAX1976AEZT120+T Description: IC REG LIN 1.2V 300MA TSOT23-6	Manufacturers: Maxim Integrated	RFQ
	Part#: MAX1976AETT250+ Description: IC REG LINEAR 2.5V 300MA 6TDFN	Manufacturers: Maxim Integrated	RFQ
	Part#: MAX1976AEZT150+T Description: IC REG LIN 1.5V 300MA TSOT23-6	Manufacturers: Maxim Integrated	RFQ

Related keywords for MAX1976AEZT160+T

Maxim Integrated MAX1976AEZT160+T	MAX1976AEZT160+T distributor	MAX1976AEZT160+T supplier	MAX1976AEZT160+T price
MAX1976AEZT160+T download datasheet	MAX1976AEZT160+T datasheet	MAX1976AEZT160+T stock	buy MAX1976AEZT160+T
Maxim Integrated MAX1976AEZT160+T			